

Batterypack 24V 4.0Ah (MSP-A-AH-00100)

Specifications

Voltage	24 Volt
Capacity	4 Ampère/uur
Amount of cells	2 Battery cells
Type of battery	SLA
Charging time	4 hours with charger MSP-C-AH-00200
Materials	ABS, Brass, PVC, Copper
Case colour	Gray RAL7014, Blue
Dimensions LxWxH	521x89x55mm

Order Information

Article number	MSP-A-AH-00100
Compatible with	NDA0100-XX / HMX991
Arjo number	
Packaging	Individual packed, 140 pcs per pallet
M.O.Q.	1 piece
Delivery time	2-3 working days



Suitable for patient hoists

- + Sara 3000 family
- + Marisa
- + Minstrel Single
- + Minstrel Double
- + Walker
- + Calypso
- + Alenti
- + Maxi Move
- + Miranti
- + Bolero

Battery cell Characteristics | Constant Current Discharge (Ampères) at 25°C

F.V/Time	5min	10min	15min	20min	30min	45min	1h	2h	3h	4h	5h	6h	8h	10h	20h
1.85V/cell	7.68	5.35	4.42	3.83	3.07	2.36	1.93	1.18	0.899	0.739	0.627	0.543	0.432	0.359	0.198
1.80V/cell	9.44	6.39	5.12	4.33	3.40	2.58	2.08	1.25	0.945	0.777	0.654	0.567	0.448	0.372	0.200
1.75V/cell	11.2	7.22	5.65	4.72	3.63	2.74	2.19	1.31	0.979	0.801	0.672	0.581	0.460	0.379	0.202
1.70V/cell	12.7	7.97	6.11	5.06	3.82	2.84	2.28	1.36	1.01	0.821	0.689	0.595	0.467	0.386	0.206
1.65V/cell	14.0	8.57	6.46	5.32	3.98	2.95	2.38	1.40	1.04	0.838	0.704	0.607	0.475	0.391	0.208
1.60V/cell	14.7	8.93	6.74	5.48	4.09	3.02	2.43	1.45	1.06	0.859	0.718	0.619	0.485	0.398	0.210

Battery cell Characteristics | Constant Power Discharge (Watt/Cell) at 25°C

F.V/Time	5min	10min	15min	20min	30min	45min	1h	2h	3h	4h	5h	6h	8h	10h	20h
1.85V/cell	14.5	10.2	8.49	7.42	5.99	4.63	3.81	2.34	1.79	1.47	1.26	1.09	0.869	0.724	0.400
1.80V/cell	17.6	12.0	9.76	8.33	6.59	5.02	4.07	2.47	1.87	1.54	1.30	1.13	0.896	0.745	0.402
1.75V/cell	20.6	13.5	10.7	9.00	6.99	5.30	4.26	2.56	1.92	1.58	1.33	1.15	0.914	0.755	0.403
1.70V/cell	23.1	14.7	11.4	9.59	7.29	5.47	4.42	2.65	1.97	1.61	1.35	1.17	0.922	0.763	0.408
1.65V/cell	25.1	15.6	12.0	9.96	7.53	5.65	4.57	2.71	2.01	1.63	1.38	1.19	0.933	0.770	0.412
1.60V/cell	26.0	16.1	12.3	10.2	7.67	5.72	4.64	2.78	2.05	1.66	1.40	1.21	0.947	0.779	0.412

Battery pack 24V 5.5Ah (MSP-A-AH-00110)

Specifications

Voltage	24 Volt
Capacity	5.5 Ampère/uur
Amount of cells	2 Battery cells
Type of battery	SLA
Charging time	5 hours with charger MSP-C-AH-00200
Materials	ABS, Brass, PVC, Copper
Case colour	Gray RAL7014 Blue
Dimensions LxWxH	521x89x55mm

Order information

Article number	MSP-A-AH-00110
Article number Arjo	NDA0200
Packaging	Individual packed, 140 pcs per pallet
M.O.Q.	1 piece
Delivery time	2-3 working days



Suitable for Patient Hoists

+ Maxi Move

Battery cell Characteristics | Constant Current Discharge (Ampères) at 25°C

F.V/Time	5min	10min	15min	20min	30min	45min	1h	2h	3h	4h	5h	6h	8h	10h	20h
1.85V/cell	7.68	5.35	4.42	3.83	3.07	2.36	1.93	1.18	0.899	0.739	0.627	0.543	0.432	0.359	0.198
1.80V/cell	9.44	6.39	5.12	4.33	3.40	2.58	2.08	1.25	0.945	0.777	0.654	0.567	0.448	0.372	0.200
1.75V/cell	11.2	7.22	5.65	4.72	3.63	2.74	2.19	1.31	0.979	0.801	0.672	0.581	0.460	0.379	0.202
1.70V/cell	12.7	7.97	6.11	5.06	3.82	2.84	2.28	1.36	1.01	0.821	0.689	0.595	0.467	0.386	0.206
1.65V/cell	14.0	8.57	6.46	5.32	3.98	2.95	2.38	1.40	1.04	0.838	0.704	0.607	0.475	0.391	0.208
1.60V/cell	14.7	8.93	6.74	5.48	4.09	3.02	2.43	1.45	1.06	0.859	0.718	0.619	0.485	0.398	0.210

Battery cell Characteristics | Constant Power Discharge (Watt/Cell) at 25°C

F.V/Time	5min	10min	15min	20min	30min	45min	1h	2h	3h	4h	5h	6h	8h	10h	20h
1.85V/cell	14.5	10.2	8.49	7.42	5.99	4.63	3.81	2.34	1.79	1.47	1.26	1.09	0.869	0.724	0.400
1.80V/cell	17.6	12.0	9.76	8.33	6.59	5.02	4.07	2.47	1.87	1.54	1.30	1.13	0.896	0.745	0.402
1.75V/cell	20.6	13.5	10.7	9.00	6.99	5.30	4.26	2.56	1.92	1.58	1.33	1.15	0.914	0.755	0.403
1.70V/cell	23.1	14.7	11.4	9.59	7.29	5.47	4.42	2.65	1.97	1.61	1.35	1.17	0.922	0.763	0.408
1.65V/cell	25.1	15.6	12.0	9.96	7.53	5.65	4.57	2.71	2.01	1.63	1.38	1.19	0.933	0.770	0.412
1.60V/cell	26.0	16.1	12.3	10.2	7.67	5.72	4.64	2.78	2.05	1.66	1.40	1.21	0.947	0.779	0.412

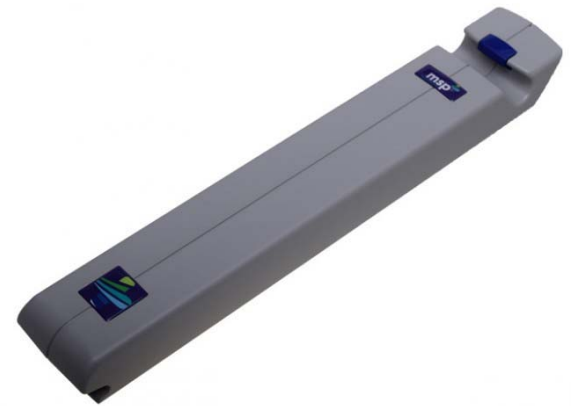
Battery pack 24V 5Ah (MSP-A-AH-00120)

Specifications

Voltage	24 Volt
Capacity	5 Ampère/uur
Amount of cells	2 Battery cells
Type of battery	SLA
Charging time	5 hours with charger MSP-C-AH-00200
Materials	ABS, Brass, PVC, Copper
Case colour	Gray RAL7014 Blue
Dimensions LxWxH	521x89x55mm

Order information

Article number	MSP-A-AH-00120
Article number Arjo	NDA0200-XX
Packaging	Individual packed, 140 pcs per pallet
M.O.Q.	1 piece
Delivery time	2-3 working days



Suitable for Patient Hoists

+ Maxi Move

Battery cell Characteristics | Constant Current Discharge (Ampères) at 25°C

F.V/Time	5min	10min	15min	20min	30min	45min	1h	2h	3h	4h	5h	6h	8h	10h	20h
1.85V/cell	7.68	5.35	4.42	3.83	3.07	2.36	1.93	1.18	0.899	0.739	0.627	0.543	0.432	0.359	0.198
1.80V/cell	9.44	6.39	5.12	4.33	3.40	2.58	2.08	1.25	0.945	0.777	0.654	0.567	0.448	0.372	0.200
1.75V/cell	11.2	7.22	5.65	4.72	3.63	2.74	2.19	1.31	0.979	0.801	0.672	0.581	0.460	0.379	0.202
1.70V/cell	12.7	7.97	6.11	5.06	3.82	2.84	2.28	1.36	1.01	0.821	0.689	0.595	0.467	0.386	0.206
1.65V/cell	14.0	8.57	6.46	5.32	3.98	2.95	2.38	1.40	1.04	0.838	0.704	0.607	0.475	0.391	0.208
1.60V/cell	14.7	8.93	6.74	5.48	4.09	3.02	2.43	1.45	1.06	0.859	0.718	0.619	0.485	0.398	0.210

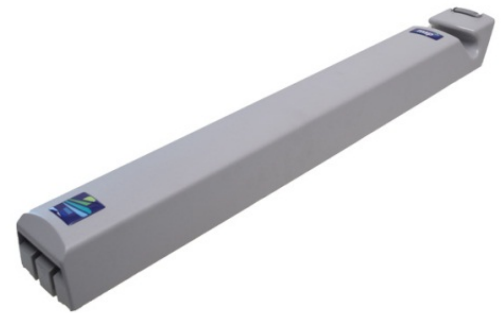
Battery cell Characteristics | Constant Power Discharge (Watt/Cell) at 25°C

F.V/Time	5min	10min	15min	20min	30min	45min	1h	2h	3h	4h	5h	6h	8h	10h	20h
1.85V/cell	14.5	10.2	8.49	7.42	5.99	4.63	3.81	2.34	1.79	1.47	1.26	1.09	0.869	0.724	0.400
1.80V/cell	17.6	12.0	9.76	8.33	6.59	5.02	4.07	2.47	1.87	1.54	1.30	1.13	0.896	0.745	0.402
1.75V/cell	20.6	13.5	10.7	9.00	6.99	5.30	4.26	2.56	1.92	1.58	1.33	1.15	0.914	0.755	0.403
1.70V/cell	23.1	14.7	11.4	9.59	7.29	5.47	4.42	2.65	1.97	1.61	1.35	1.17	0.922	0.763	0.408
1.65V/cell	25.1	15.6	12.0	9.96	7.53	5.65	4.57	2.71	2.01	1.63	1.38	1.19	0.933	0.770	0.412
1.60V/cell	26.0	16.1	12.3	10.2	7.67	5.72	4.64	2.78	2.05	1.66	1.40	1.21	0.947	0.779	0.412

Battery pack 24V 6.0Ah (MSP-A-AH-00200)

Specifications

Voltage	24 Volt
Capacity	6 Ampère/hour
Amount of cells	4 battery cells
Type of battery	SLA
Charging time	6 hours with charger MSP-C-AH-00100
Materials	ABS, Brass, PVC, Copper,
Casing colour	Gray RAL7016, Dark gray
Dimensions LxWxH	728x101x70mm



Order information

Article number	MSP-A-AH-00200
Compatible with	KPA0100-XX / SPL3021
Arjo number	
Packaging	Individual packed, 90 pcs per pallet
M.O.Q.	1 piece
Delivery time	3-4 working days

Suitable for patient hoists

- + Sara Plus family
- + Tenor
- + Opera
- + Tempo
- + Encore

Battery cells Characteristics | Constant Current Discharge (Ampères) at 25°C

F.V/Time	1min	2min	3min	6min	10min	20min	30min	1h	2h	3h	5h	10h
1.85V/cell	30.6	30.0	24.0	20.6	13.2	7.2	5.5	3.7	1.8	1.4	0.9	0.5
1.80V/cell	40.3	32.6	31.5	21.4	15.4	8.4	6.0	3.9	1.9	1.45	0.91	0.62
1.75V/cell	51.3	36.8	35.6	22.3	17.1	9.6	6.6	4.1	2.0	1.50	0.98	0.68
1.70V/cell	26.4	26.5	21.0	15.9	10.6	6.8	5.2	3.5	1.7	1.35	0.8	0.43
1.65V/cell	37.0	29.7	28.5	19.3	14.5	7.0	5.3	3.7	1.79	1.39	0.86	0.49
1.60V/cell	44.5	31.2	29.8	20.2	16.5	7.1	5.6	3.9	1.86	1.42	0.89	0.55

Battery cells Characteristics | Constant Power Discharge (Watt/Cel) at 25°C

F.V/Time	1min	2min	3min	6min	10min	20min	30min	1h	2h	3h	5h	10h
1.85V/cell	45.5	44.5	35.5	30.8	21.3	13.7	7.9	6.0	3.7	2.74	1.86	0.98
1.80V/cell	62.2	49.8	48.9	32.4	24.6	14.3	10.2	6.6	3.6	2.86	1.92	1.11
1.75V/cell	72.8	52.5	50.7	33.7	29.0	15.6	10.7	6.8	3.7	3.00	1.98	1.24
1.70V/cell	41.7	42.0	33.0	26.4	18.2	12.9	7.2	6.0	3.1	2.47	1.61	0.86
1.65V/cell	54.7	44.5	43.5	30.3	22.4	13.7	7.9	6.2	3.45	2.72	1.67	0.98
1.60V/cell	67.7	48.8	48.4	30.9	24.8	15.0	9.7	6.4	3.59	2.74	1.73	1.11

Battery pack NiMH 24V 2.5Ah (MSP-A-AH-00300)

Specifications

Voltage	24 Volt
Capacity	2.5 Ampère/uur
Amount of cells	10 Battery cells
Type of battery	NiMH
Charging time	2.5 hours with charger MSP-C-AH-00500
Materials	ABS, Brass, PVC, Copper
Case colour	Gray RAL7014
Dimensions LxWxH	315x103x30mm

Order information

Article number	MSP-A-AH-00300
Article number Arjo	NEA0100-XX
Packaging	Individual packed, 140 pcs per pallet
M.O.Q.	1 piece
Delivery time	2-3 working days



Suitable for Patient Hoists

- + Carendp
- + Carino
- + Maxi twin
- + Maxi twin compact

Batterypack 24V 4.0Ah (MSP-A-AH-00400)

Specifications

Voltage	24 Volt
Capacity	4 Ampère/hour
Amount of cells	2 battery cells
Type of battery	SLA
Charging time	4 hours with charger MSP-C-AH-00300
Materials	ABS, Brass, PVC, Copper,
Casing colour	White RAL9010
Dimensions LxWxH	228x130x103mm



Order information

Article number	MSP-A-AH-00400
Compatible with	KKA1100-XX
Arjo number	
Packaging	Individual packed, 100 pcs per pallet
M.O.Q.	1 piece
Delivery time	2-3 working days

Suitable for patient hoists

- + Ambulift
- + Maxi Move old
- + Maxilift

Battery cells Characteristics | Constant Current Discharge (Ampères) at 25°C

F.V/Time	5min	10min	15min	20min	30min	45min	1h	2h	3h	4h	5h	6h	8h	10h	20h
1.85V/cell	7.68	5.35	4.42	3.83	3.07	2.36	1.93	1.18	0.899	0.739	0.627	0.543	0.432	0.359	0.198
1.80V/cell	9.44	6.39	5.12	4.33	3.40	2.58	2.08	1.25	0.945	0.777	0.654	0.567	0.448	0.372	0.200
1.75V/cell	11.2	7.22	5.65	4.72	3.63	2.74	2.19	1.31	0.979	0.801	0.672	0.581	0.460	0.379	0.202
1.70V/cell	12.7	7.97	6.11	5.06	3.82	2.84	2.28	1.36	1.01	0.821	0.689	0.595	0.467	0.386	0.206
1.65V/cell	14.0	8.57	6.46	5.32	3.98	2.95	2.38	1.40	1.04	0.838	0.704	0.607	0.475	0.391	0.208
1.60V/cell	14.7	8.93	6.74	5.48	4.09	3.02	2.43	1.45	1.06	0.859	0.718	0.619	0.485	0.398	0.210

Battery cells Characteristics | Constant Power Discharge (Watt/Cell) at 25°C

F.V/Time	5min	10min	15min	20min	30min	45min	1h	2h	3h	4h	5h	6h	8h	10h	20h
1.85V/cell	14.5	10.2	8.49	7.42	5.99	4.63	3.81	2.34	1.79	1.47	1.26	1.09	0.869	0.724	0.400
1.80V/cell	17.6	12.0	9.76	8.33	6.59	5.02	4.07	2.47	1.87	1.54	1.30	1.13	0.896	0.745	0.402
1.75V/cell	20.6	13.5	10.7	9.00	6.99	5.30	4.26	2.56	1.92	1.58	1.33	1.15	0.914	0.755	0.403
1.70V/cell	23.1	14.7	11.4	9.59	7.29	5.47	4.42	2.65	1.97	1.61	1.35	1.17	0.922	0.763	0.408
1.65V/cell	25.1	15.6	12.0	9.96	7.53	5.65	4.57	2.71	2.01	1.63	1.38	1.19	0.933	0.770	0.412
1.60V/cell	26.0	16.1	12.3	10.2	7.67	5.72	4.64	2.78	2.05	1.66	1.40	1.21	0.947	0.779	0.412

Batterypack 24V 2.3Ah (MSP-A-AH-00500)

Specifications

Voltage	24 Volt
Capacity	2.3 Ampère/hour
Amount of cells	2 battery cells
Type of battery	SLA
Charging time	2.5 hours with charger MSP-C-AH-00400
Materials	ABS, Brass, PVC, Copper,
Casing colour	Grey RAL7035
Dimensions LxWxH	248x88x75mm



Order information

Article number	MSP-A-AH-00500
Compatible with	KTA0102
Arjo number	
Packaging	Individual packed, 140 pcs per pallet
M.O.Q.	1 piece
Delivery time	2-3 working days

Suitable for patient hoists

- + Sarita
- + Trixie

Battery cells Characteristics | Constant Current Discharge (Ampères) at 25°C

F.V/Time	5min	10min	15min	20min	30min	45min	1h	2h	3h	4h	5h	10h
1.85V/cell	4.42	3.08	2.54	2.20	1.77	1.36	1.11	0.679	0.517	0.425	0.361	0.207
1.80V/cell	5.43	3.67	2.94	2.49	1.96	1.48	1.20	0.721	0.544	0.447	0.376	0.214
1.75V/cell	6.43	4.15	3.25	2.71	2.09	1.57	1.26	0.752	0.563	0.461	0.386	0.218
1.70V/cell	7.30	4.58	3.51	2.91	2.19	1.63	1.31	0.783	0.581	0.472	0.396	0.222
1.65V/cell	8.05	4.93	3.72	3.06	2.29	1.70	1.37	0.806	0.596	0.482	0.405	0.225
1.60V/cell	8.45	5.13	3.87	3.15	2.35	1.74	1.40	0.831	0.610	0.494	0.413	0.229

Battery cells Characteristics | Constant Power Discharge (Watt/Cell) at 25°C

F.V/Time	5min	10min	15min	20min	30min	45min	1h	2h	3h	4h	5h	10h
1.85V/cell	8.83	5.86	4.8	4.27	3.45	2.66	2.19	1.34	1.03	0.848	0.722	0.416
1.80V/cell	10.1	6.93	5.61	4.79	3.79	2.89	2.34	1.42	1.07	0.886	0.748	0.428
1.75V/cell	11.8	7.76	6.13	5.17	4.02	3.05	2.45	1.47	1.11	0.908	0.764	0.434
1.70V/cell	13.3	8.46	6.58	5.51	4.19	3.15	2.54	1.52	1.14	0.925	0.778	0.439
1.65V/cell	14.5	8.99	6.87	5.73	4.33	3.25	2.63	1.56	1.16	0.940	0.792	0.443
1.60V/cell	14.9	9.24	7.08	5.84	4.41	3.29	2.67	1.60	1.18	0.957	0.803	0.448

Battery pack 36V 2.3Ah (MSP-A-EG-00100)

Specifications

Voltage	36 Volt
Capacity	2.3 Ampère/hour
Amount of cells	3 Battery cells
Type of battery	SLA
Charging time	3 hours
Materials	Metal, Brass, Copper
Case colour	Black
Dimensions LxWxH	80x105x240mm

Order information

Article number	MSP-A-EG-00100
Article number	CP3623
Ergolet	
Packaging	Individual packed, 100 pcs per pallet
M.O.Q.	1 piece
Delivery time	2-3 working days



Suitable for Patient Hoists

- + Maya 1
- + Faun 1

Battery Cell Characteristics | Constant Current Discharge (Ampères) at 25°C

F.V/Time	5min	10min	15min	20min	30min	45min	1h	2h	3h	4h	5h	10h
1.85V/cell	4.42	3.08	2.54	2.20	1.77	1.36	1.11	0.679	0.517	0.425	0.361	0.207
1.80V/cell	5.43	3.67	2.94	2.49	1.96	1.48	1.20	0.721	0.544	0.447	0.376	0.214
1.75V/cell	6.43	4.15	3.25	2.71	2.09	1.57	1.26	0.752	0.563	0.461	0.386	0.218
1.70V/cell	7.30	4.58	3.51	2.91	2.19	1.63	1.31	0.783	0.581	0.472	0.396	0.222
1.65V/cell	8.05	4.93	3.72	3.06	2.29	1.70	1.37	0.806	0.596	0.482	0.405	0.225
1.60V/cell	8.45	5.13	3.87	3.15	2.35	1.74	1.40	0.831	0.610	0.494	0.413	0.229

Battery Cell Characteristics | Constant Power Discharge (Watt/Cell) at 25°C

F.V/Time	5min	10min	15min	20min	30min	45min	1h	2h	3h	4h	5h	10h
1.85V/cell	8.83	5.86	4.80	4.27	3.45	2.66	2.19	1.34	1.03	0.848	0.722	0.416
1.80V/cell	10.1	6.93	5.61	4.79	3.79	2.89	2.34	1.42	1.07	0.886	0.748	0.428
1.75V/cell	11.8	7.76	6.13	5.17	4.02	3.05	2.45	1.47	1.11	0.908	0.764	0.434
1.70V/cell	13.3	8.46	6.58	5.51	4.19	3.15	2.54	1.52	1.14	0.925	0.778	0.439
1.65V/cell	14.5	8.99	6.87	5.73	4.33	3.25	2.63	1.56	1.16	0.940	0.792	0.443
1.60V/cell	14.9	9.24	7.08	5.84	4.41	3.29	2.67	1.60	1.18	0.957	0.803	0.448

Battery pack 24V 5.5Ah (MSP-A-MB-00100)

Specifications

Voltage	24 Volt
Capacity	5.5 Ampère/uur
Amount of cells	2 Battery cells
Type of battery	SLA
Charging time	5 hours with charger MSP-C-MB-00100
Materials	ABS, Brass, PVC, Copper
Case colour	Gray RAL7035
Dimensions LxWxH	126x76x207mm

Order information

Article number	MSP-A-MB-00100
Replaces article number Arjo / Medibol	TGT 223
Packaging	Individual packed, 100 pcs per pallet
M.O.Q.	1 piece
Delivery time	2 working days



Suitable for Patient Hoists

- + Gemini Single
- + Gemini Double
- + Excelsior
- + Minerva

Battery cell Characteristics | Constant Current Discharge (Ampères) at 25°C

F.V/Time	5min	10min	15min	20min	30min	45min	1h	2h	3h	4h	5h	6h	8h	10h	20h
1.85V/cell	10.4	7.23	5.96	5.17	4.15	3.19	2.61	1.59	1.21	0.998	0.847	0.734	0.583	0.485	0.267
1.80V/cell	12.7	8.62	6.91	5.85	4.59	3.48	2.81	1.69	1.28	1.05	0.883	0.766	0.605	0.502	0.270
1.75V/cell	15.1	9.75	7.62	6.37	4.90	3.69	2.95	1.77	1.32	1.08	0.907	0.785	0.621	0.512	0.273
1.70V/cell	17.1	10.8	8.25	6.84	5.15	3.84	3.08	1.84	1.36	1.11	0.930	0.804	0.630	0.521	0.278
1.65V/cell	18.9	11.6	8.73	7.18	5.37	3.99	3.21	1.89	1.4	1.13	0.95	0.819	0.641	0.528	0.281
1.60V/cell	19.8	12.1	9.09	7.4	5.52	4.08	3.28	1.95	1.43	1.16	0.97	0.835	0.654	0.537	0.283

Battery cell Characteristics | Constant Power Discharge (Watt/Cell) at 25°C

F.V/Time	5min	10min	15min	20min	30min	45min	1h	2h	3h	4h	5h	6h	8h	10h	20h
1.85V/cell	19.6	13.8	11.5	10.0	8.09	6.25	5.14	3.15	2.41	1.99	1.69	1.47	1.17	0.978	0.540
1.80V/cell	23.8	16.3	13.2	11.2	8.89	6.77	5.50	3.33	2.52	2.08	1.76	1.53	1.21	1.01	0.543
1.75V/cell	27.8	18.2	14.4	12.1	9.43	7.16	5.76	3.46	2.59	2.13	1.79	1.55	1.23	1.02	0.544
1.70V/cell	31.2	19.9	15.4	12.9	9.84	7.39	5.97	3.58	2.67	2.17	1.83	1.58	1.25	1.03	0.551
1.65V/cell	33.9	21.1	16.1	13.5	10.2	7.63	6.17	3.66	2.72	2.21	1.86	1.61	1.23	1.04	0.556
1.60V/cell	35.1	21.7	16.6	13.7	10.3	7.72	6.26	3.75	2.77	2.25	1.89	1.63	1.28	1.05	0.556